



AL-BATINA INT ENGINEERING & SERVICES LLC

الباطنة الدولية للهندسة والخدمات ش.م.م

comPany ROFILE





Table of Contents

About

Services

ENGINEERING
PROCUREMENT
CIVIL CONSTRUCTION
MECHANICAL FABRICATION & ERECTION
EPC
ELECTRICAL & INSTRUMENTATION INSTALLATION
TERRESTRIAL SURVEYING
MAINTENANCE SERVICES
EQUIPMENT & MACHINERY

INTRODUCTION
LOCATION OF HEAD OFFICE
OUR VISION & MISSION
COMPANY ORGANIZATION STRUCTURE
OUR CLIENTS

Projects

CURRENT & COMPLETED PROJECTS DETAIL
EQUIPMENT'S CATEGORY & SURVEYING EQUIPMENTS
APPRECIATION LETTERS
PROJECT PHOTO GALLERY



Introduction

Since the mid of last Decade, Al-Batina International Engineering & Services LLC (ABI E&S) is a leading construction & infrastructure company in Sohar, Sultanate of Oman. ABI E&S capable with single source in-house specialists for engineering, procurement and construction of industrial facilities, workshops, warehouses, sheds, steel structures, road infrastructure construction, earthwork & land development, Mechanical fabrication & erection services, gas & Liquid Piping, Electrical - instrumentation installations works in both onshore and offshore areas.

Our dedication to providing high quality construction on time and within budget has given us the reputation as one of the highly reliable and dependable construction company in Sohar, Sultanate of Oman. The name ABI E&S synonymous with; integrity, reliability, quality & professionalism.

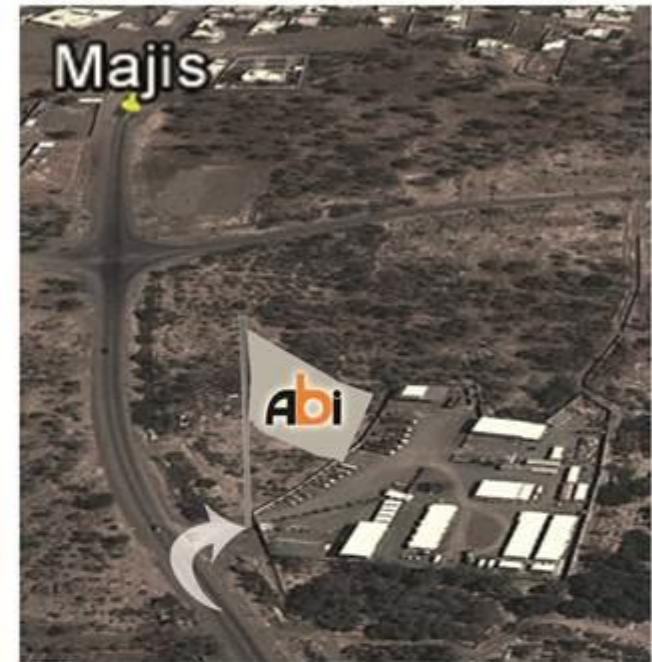
Group Companies:

Presently, the ABI Group represents a total of 4 group companies, which are duly incorporated with Liabilities of Designing and Construction Activities. They include...

- ❖ Al-Batina International Equipment & Transport LLC
- ❖ Al-Batina Union for Commercial Projects Cont. LLC
- ❖ Sohar Information Technology LLC
- ❖ Bright Pluto Trading & Services

"We ABI Group are steadfast in our resolve to become the leading provider of Construction Management Services by offering innovative, economical, Safe and Reliable Complete Construction Solutions."

Location of Head Office



Al Batina International
Engineering & Services LLC
P.O Box 105/322
Sohar, Sultanate of Oman
C.R 3/23844/0
Tel: +968-22005778
Fax: +968-22005779

Abdul Kader Al-Farsi (CEO)
Email: abdulkader@albatina.com
Cell #:+968-99881214

Ahmed Moosa Al-Farsi (MD)
Email: ahmed@albatina.com
Cell #:+968-95553556



Our Vision & Mission

Vision:

The Company continues to move forward in become the leading Engineering and Construction firm in Sultanate of Oman and eventually the region, by consistently delivering projects that meet international standards.

Mission:

Our mission is to provide our employees with an honest and helpful working environment, where every employee individually and collectively, can dedicate themselves to providing our clients with exceptional workmanship, extraordinary service, and professional integrity.

ABI Construction Company is a leader in providing value-added construction services to our clients by creating a successful business with them throughout the construction process. Our promise is to establish long-lasting relationships with our clients by exceeding their expectations and gaining their trust through exceptional performance by every member of the construction team.

COMPANY ORGANIZATION STRUCTURE



Major clients

- Orpic
- Aromatics Oman LLC
- Sohar Industrial Port Company (SIPC)
- Sohar Aluminium Oman (SA)
- VALE Oman Pelletizing Company LLC
- C. Steinweg Oman LLC
- L&T MFY LLC
- L&T Heavy Engineering LLC
- L&T Electromech LLC
- Alstom Power Services LLC
- Mobilift & Partners LLC
- Oman German Company
- Van Oord Oman LLC
- Desert Line Projects LLC
- GS Engineering & Construction LLC



AL-BATINA INT ENGINEERING & SERVICES LLC
الباطنة الدولية للهندسة والخدمات ش.م.م

أوربك
Orpic

Major clients

Aromatics Oman
العمانيات العطرية

Services





❑ Services (Area of Operations)

Al-Batina is a leader of Engineering Works, Construction Company in Sohar, Sultanate of Oman having up-to 18 years of experience with more than 200 permanent employees. One of the oldest Omani construction company in Sohar, Sultanate of Oman.

❑ Engineering Services

❑ Civil/Structure Design

- Steel & Concrete Structures
- Industrial Facilities and Control Buildings
- Pipe Racks, Pile Foundations, Equipment Foundations, Tank Foundations
- Warehouses & Workshops, elevated and Underground Tanks
- Underground Services

❑ Electrical Design

- Area Classification Drawings
- Single Line Drawings
- Schematic and Wiring Diagrams
- Specification and Data Sheets, Layout and Routing Drawings
- Communication Systems
- Fire Alarm Systems

❑ Piping Design

- Plot Plans
- Conceptual Piping Studies and Layouts
- Piping Plans, Isometrics, Bill of Materials
- Pipeline design
- Piping and Instrumentation diagrams (P&IDs)
- Process Flow Diagrams
- Hydraulic Calculations



❑ Procurement Services

- Pre-qualification of vendors and review evaluations
- Import, export and customs clearance activities
- Documentation for opening LC's
- Logistic Management

❑ Civil Construction Services

- ❖ Earth Works
 - Site Preparation
 - Soil Improvement
 - Embankments & Bunds
- ❖ Water Reservoir & Channels
- ❖ Foundation
 - For Static Equipment
 - For Rotary Equipment
- ❖ Rafts / Independent Foundations
- ❖ Piling
- ❖ Structures/Buildings
- ❖ Steel Frame Structures
- ❖ R.C.C Frame Structure
- ❖ Road Works

❑ Mechanical Construction

(Fabrication & Erection) Services

ABI provides mechanical construction services for 'grass-root' projects as well as for expansion/revamping of existing facilities comprising of erection of piping / pipe racks, steel structures, Pumps Installation, tanks, painting, insulation, testing and precommissioning/commissioning.



❑ EPC or EPCC work Services

ABI capability to provide turnkey/ EPC services has grown over the years by combining our knowledge and experience in specialized fields. Our organization structure especially lends itself to offering highly competitive EPCC solutions for medium sized projects.

❑ Engineering

Basic and detailed engineering is performed by ABI joint Venture Consultant design facility equipped with world-class engineering applications. An extensive communication network is in place for data transmittal, document control, and project management to ensure smooth interaction between all stakeholders.

❑ Procurement

An experienced group of specialists provides procurement and expediting services for plant equipment and bulk materials. Our multiple operating bases in the Gulf region allow us to facilitate fast-track procurement through an established network of suppliers.

❑ Construction

Complete general contracting services integrating civil, mechanical, electrical and instrumentation disciplines, are core strength. Over the years, we have invested in acquiring a large asset base of construction equipment.

❑ Commissioning

Expertise in developing procedures and systems for providing plant commissioning services and operator training is available for this critical phase of an EPC project.



❑ Electrical & Instrumentation Installation Services

These services include testing and commissioning of:

- HV Power Transformers
- LV Switchgear
- Power and Emergency Power Generators
- Telecommunication Systems
- Fire Alarm and Sprinkler Systems
- Power Distribution Boards and Panels
- Motor Control Centers
- Grounding and Lightning Systems
- External and Internal Lighting System
- Package Units (Refrigeration, Gas Generation, Water Demineralization etc.)
- Motors of all kinds
- Cables and Support Systems

❑ Terrestrial Surveying

- 3D-Laser Scanner Survey
 - Mining Field: Volume Calculations of Irregular Shapes (Spatial Dimensions)
 - Construction Verifications (As Built)
 - Shoreline Mapping
- Topography Survey
- Route Survey
- GPS Control Survey
- Pipeline Survey



❑ Maintenance Services

Al-Batina provides plant maintenance services to operating plants. We have established a professional competence in maintenance of industrial plants. The following services are available.

- Civil works Maintenance Services
- Road Embankments Maintenance
- Steel & Concrete Structures Maintenance
- Plumbing & Sanitary Maintenance
- Electrical works Maintenance
- Piping Works Maintenance

❑ Machinery & Equipment

This Division has inherited a wide range of heavy construction equipment. This equipment is now fully updated and revamped to form a balanced holding capable of supporting both existing and new projects for the Plant & Pipeline Construction Divisions in addition to providing a Full Plant and Equipment hire rental service.

Projects Detail



AL-BATINA INT ENGINEERING & SERVICES LLC
الباطنة الدولية للهندسة والخدمات ش.م.م

ORPIC (Oman Refinery & Petrochemical

• Location: Sohar Industrial Port



Project Installation of 3rd Air Dryer Unit at AOL Plant (2014)
Status Under Construction
Location AOL Plant, Sohar Refinery
Client Orpic



Project Procurement & construction of blast proof operator shelter (2013)
Status Completed
Location Sohar Refinery Plant Area
Client ORPIC



Project Design, Fabrication, Supply and Installation of Covers for WWTP tank Covers
Status Completed
Location Sohar Refinery, WWT Plant Area
Main Contractor Al-Saqr Fiber Glass Factory LLC (Sharjah, UAE)
Client Orpic



Project EPC contract for the Construction of Workshop (90x49m), Warehouse (90x39m) & Fire Station (40x20m) Buildings with various civil works at Aromatics Oman Sohar Plant. (2010).
Status Completed
Location Aromatics Oman Plant
Client Aromatics Oman LLC



Project *Modification of the Foundation & Supporting Structures of PV-008 control Valve. (2012)*
Status *Completed*
Location *Aromatics Oman Plant*
Client *Orpic*



Project *Erection of Fire Water Pipeline Work at SRC Refinery, Site Integration Project. (2012)*
Status *Completed*
Location *ORPIC-Sohar Refinery*
Main Contractor *National Electrical & Building Contractors LLC*
Client *Orpic*

Project *Construction of Road 7m wide, 400m long & 100 mm thick Asphalt Road at Aromatics Oman site, Sohar Port, Oman (2010)*
Status *Completed*
Location *Aromatics Oman Plant*
Client *Aromatics Oman LLC*



MAJIS (Majis Industrial Services SAOC)

• **Location: Sohar Industrial Port Area**



Project *Construction of Storage Facility & Central Control room and Call Centre Building (2014)*
Status *Under-Construction*

Vale Oman Pelletizing Company

• Location: Vale Oman Pelletizing Plant, Sohar Industrial Port



Project Construction of Master Gate House at VALE Oman Pelletizing Plant Sohar. (2014)

Status Completed



Project Installation of Weigh Feeder Panel Room at VALE Oman Pelletizing Plant Sohar. (2014)

Status Completed



Project Logistics Services for Bentonite & Grinding Media at VALE Oman Pelletizing Plant Sohar. (2012)

Status Contract Duration (02 Years)



Project Civil Works for Iron Ore Emergency Pile work at VALE Oman Pelletizing Plant Sohar. (2012)

Status Completed



Project Miscellaneous Works (Car Parking Facilities, Security Office, Security Gate etc...) at VALE Oman Pelletizing Plant Sohar. (2012)

Status Completed



Project Pipelines Erection work having 12.5 Km total running length with total 16,000 dia inches piping work at VALE Oman Pelletizing Plant Sohar. (2011)

Status Completed



SA (Sohar Aluminium Company)

• Location: Sohar Industrial Area



Project	<i>Construction of Scrap Metal Storage Area. (2014)</i>
Status	<i>Completed</i>
Project	<i>Shifting of Mohawak lift and associated civil works (2014)</i>
Status	<i>Completed</i>
Project	<i>Construction of New main entrance GATEWAY Building and associated Works including electrical, plumbing, fire fighting & communication works. (2012)</i>
Status	<i>Completed</i>
Project	<i>Construction of Training Centre Extension Phase-4. (2012)</i>
Status	<i>Completed</i>
Project	<i>Parking Building for Ambulance and Fire Trucks. (2012)</i>
Status	<i>Completed</i>



OMC (Oman Methanol Company)

• Location: Sohar Industrial Port Area



Project	<i>Construction Works for the Extension & Modification of Fire Station. (2013)</i>
Status	<i>Completed</i>
Project	<i>Permanent Power & Lighting Arrangement for Oman Methanol Fencing (2014)</i>
Status	<i>Completed</i>

C. Steinweg Oman LLC

- Location: Sohar Industrial Port



C. Steinweg Oman LLC

Stevedore & Terminal Operator | Port of Sohar

Project	Earth work of 62,000 m ² (Excavation, Filling & Compaction & Heavy duty Interlock Installation work) at C.Steinweg Oman Terminal. (2014) Supplying & Installation of 30m High Mast 800w metal Halide Lamps -High Mast Light Pole). (2014)
Status	Under Construction
Project	Installation of 36x24 m of Bulk Storage bin. (2008)
Status	Completed
Project	Earth work (Excavation, Filling & Compaction & Heavy duty Interlock Installation work) at C.Steinweg Oman Terminal. (2008)
Status	Completed
	C.Steinweg Terminal Yard Sohar, Port
Project	<ul style="list-style-type: none">• Earth work (Excavation, Filling & Compaction Work) of 1150 m3. (2008)• Earth work (Excavation, Engineering Filling & Compaction Work) of 375000 m2. (2005)
Status	Completed
Project	Supplying & Installation of 25m High Mast 800w metal Halide Lamps Light pole. (2008)
Status	Completed



L&T MFY LLC

(L&T Modular & Fabrication Yard)

- Location: Sohar Industrial Port



Following are the detail of various works which Al-Batina carried out at L&T MFY yard Sohar Port area site:

Project	Construction of Fabrication Shop (Size 140.0x25.36m) civil works only. (2012)
Status	Completed
Project	Construction of Pipe Shop Extension (Size 50.0x19.64m) civil works only. (2012)
Status	Completed
Project	Construction of New Canteen Building 3rd Block at L&T MFY yard. (2012)
Status	Completed
Project	Construction of Paint Shop (Size 60.0x12.5m) at L&T MFY yard. (2012)
Status	Completed



Project	Construction of Toilets Block for Omani Employees at L&T MFY yard. (2012)
Status	Completed
Project	Casting & Placing R.C.C Sleepers: <ul style="list-style-type: none"> • Construction of 560 No's of R.C.C Sleeper-I (4.8mx0.98mx0.75m). (2011) • Construction of 150 No's of R.C.C Sleeper-II (6.7mx0.98mx0.75m). (2011) • Construction of 68 No's of R.C.C Sleeper-III (10mx1.48mx0.9m). (2011)
Status	Completed
Project	Construction of Client Office Building (ADMA, Size 70.0x18.0m). (2011)
Status	Completed
Project	Construction of Client Office Building (PTTEP, Size 30.0x18.0m). (2011)
Status	Completed
Project	Land Development/Soil Improvement of area behind Main Office & pipingshop around 115000 m2). (2011)
Status	Completed
Project	Supply, Construction & Placing of R.C.C blocks and R.C.C Mats work.
Status	Completed
Project	Construction of Mess Hall Building for Omani's and Indian workers at yard. (2010).
Status	Completed
Project	Construction of Fabrication Shop (60.0m x 50.0m) size.
Status	Completed



Project Construction of scrap Bin, Gas Storage & Hydro test yard, fire water pump foundation. (2008)

Status Completed

Project Design and construction of Design Centre & Client Office. (2008)

Status Completed

Project Construction of Toilet Block at L&T MFY Sohar Industrial Port area. (2008)

Status Completed

Project Construction of R.C.C. Blocks & Mats at RIG Yard. (2008)

Status Completed

Project Design & Construction of 50mx20m Canteen Facilities at L&T MFY Sohar site.

Status Completed

Project Earth Work to develop 157,000 m2 areas at L&T MFY yard Sohar Industrial Port. (2007)

Status Completed

Project Construction of Machine foundation (Plate Bending Machine) (2007)

Status Completed

Project Construction of foundation for Goliath crane (200m Long) (2007)

Status Completed

Project Construction of Concrete Platform for plate cutting yard (2007)

Status Completed



L&T MFY LLC
(L&T Modular& Fabrication Yard)
• **Location: Liwa Camp**

<i>Project</i>	Construction of New Toilet Blocks (03 No's) at Liwa L&T MFY Camp (2012)
<i>Status</i>	<i>Completed</i>
<i>Project</i>	Construction of Sub-Station (8mx5m) for L&T MFY Liwa Camp. (2010)
<i>Status</i>	<i>Completed</i>
<i>Project</i>	Construction of Mess and GYM Hall at Liwa Camp. (2010)
<i>Status</i>	<i>Status: Completed</i> <i>Completed</i>
<i>Project</i>	Construction of Toilet Building (7th block 40 no's) at Liwa Camp. (2010)
<i>Status</i>	<i>Completed</i>
<i>Project</i>	Construction of Approach Road 6m wide & 300m long near L&T MFY Liwa camp. (2010)
<i>Status</i>	<i>Completed</i>
<i>Project</i>	Design and construction of Dining Hall & Kitchen at Liwa camp. (2008)
<i>Status</i>	<i>Completed</i>
<i>Project</i>	Construction of Toilet Block at Liwa camp.
<i>Status</i>	<i>Completed</i>



L&T Heavy Engineering LLC

- Location: Sohar Industrial Port



Project	Construction of Foundation and related civil works for Faccin Rolling Machine in HFS-1 at L&T Heavy engineering site, Sohar (2010)
Status	Completed
Project	Construction of Foundation and related civil works for Floor Horizontal Borer in HFS-1 at L&T Heavy engineering site, Sohar (2010)
Status	Completed
Project	Road works for providing & marking GSB sub-grade Road from Main Store to Emergency exit and from Main gate to Main store at L&T Heavy engineering site, Sohar (2009)
Status	Completed



L&T Electromech LLC

- Location: Sohar Industrial Port



Project	Anti Buoyancy Sleepers for Culverts (Excluded Material & tools) for EPC of Gas Supply to VALE Project. (2010)
Status	Completed
Client	L&T Electromech LLC
Project	Graded Road Works & Site filling with Granular Sub-Base Material for EPC of Gas Supply to VALE Project. (2010)
Status	Completed
Client	L&T Electromech LLC
Project	Entire earthwork for Tank Pad Foundations for the civil works of additional Storage Tanks at ORPC Sohar site. (2010)
Status	Completed
Client	L&T Electromech LLC



Project	<i>Excavation of existing ground, supplying and filling of approved Type B Granular filling material, Supplying and filling of Road base filling material and transportation of excavated material work for EPC of GAS supply to VALE project. (2010)</i>
Status	<i>Completed</i>
Client	<i>L&T Electromech LLC</i>
Project	<i>Carryout Road work of 8000m² & 100 mm thick Road at Oil Storage and Terminal Facility Project (Phase- 4 & 5), Sohar Port, Oman (2010)</i>
Status	<i>Under-Construction</i>
Client	<i>L&T Electromech LLC</i>
Project	<i>Carryout Road Work & Civil works of additional Storage tanks at ORPC for DEC, Sohar Port, Oman (2010)</i>
Status	<i>Completed</i>
Client	<i>L&T Electromech LLC</i>



Van Oord Oman LLC

- Location: Sohar Industrial Port



Project	Sohar Industrial Port <ul style="list-style-type: none"> • Quay walls & dredging Phase-3. Works to Storm water Wadi channel. (2008) • Quay walls & dredging Phase-3. Hauling, Compacting & Leveling work (Infrastructure Corridor). (2008) • Quay walls & dredging Phase-3. Temporary Bund to Storm water Wadi channel. (2008) • Quay walls & dredging Phase-3. Hauling, Compacting & Leveling work (Area behind Offices). (2008) • Quay walls & dredging Phase 3. Filling & Compaction to Plot-4 Zoom Aluminum. (2008) • Quay walls & dredging Phase 3. Excavation of material from L&T 3 area and filling to fence line. (2008) • Quay walls & dredging phase 3. Excavation of material from CVRD area. (2008) • Quay walls & dredging Phase 3. Hauling and Compacting work (CVRD2 to SEZ4) area. (2008) • Quay walls & dredging Phase 3. Earth work to Majis-Storm water outfall 4
Status	<i>Completed</i>



Project Construction of Main Factory Building and Boundary Wall for AAC Block Factory at Sohar Industrial Estate. (2010-2011)

Status **Completed**

Additional works for AAC Block Factory:

- Construction of Storage Yard around 20,000 Sq.m (2011)

Status: Completed

- Construction of Main Office Building around 600 Sq.m (2011)

Status: Completed

- Construction of Recreation Building around 320 Sq.m (2011)

Status: Completed

Additional works for AAC Block Factory:

- Construction of Guard Room and Main Entrance Gate (2011)

Status: Completed

- Electromechanical works for the AAC block factory (2012)

Status: Completed

- Utility Piping works (CS & SS Pipelines) for the AAC block factory (2012)

Status: Completed

- Construction of Dry Mortar Plant including silo's foundations for the AAC block factory (2012)

Status: Under Construction



SIPC
(Sohar Industrial Port Company)
• Location: Sohar Industrial Port



Project *Survey and Crack monitoring of wet structures within SIP area. (2010 to date)*

Status *Under-Progress (Project Duration~ 3 years)*

Project *Installation & Maintenance of Bench Marks at Sohar Port & Public Corridor Area (2012).*

Status *Completed*

GS
Engineering & Construction LLC
• Location: Sohar Industrial Port



Project *Installation of 18m deep sheet piles. (2011)*

Status *Completed*

Client *GS Engineering & Construction*



Mobilift & Partners LLC

- Location: Sohar Industrial Area



Project

Construction of new Workshop and Offices for Mobilift at Sohar Industrial free Zone. (2010)

Status

Completed



Alstom Power Services (Arabia)FSE

- Location: Sohar Industrial Port



Project

Sohar Aluminum Power Plant site (SIPC Sohar).

Following are the detail of various works which Al-Batina carried out at Sohar Aluminum Power Plant, SIPC area site for ALSTOM client:

- To carry out the civil works for the Construction of Black Start Engine building (2010)
- Transformer Yard rectification work. (2010)
- Maintenance of Workshop Building. (2010)
- Tank & Motor Installation.

Status

Completed

Project

Sohar Aluminum Power Plant site (SIPC Sohar).

Following are the detail of various works which Al-Batina carried out at Sohar Aluminum Power Plant, SIPC area site for ALSTOM client:

- Al-Batina carryout whole site cleaning, Bulk Excavation & Structural filling work at Sohar Aluminum Power Plant site. (2006-2007) Which having massive quantity of earth work as mentioned below:

- o Site Cleaning 500,000 m²
- o Bulk Excavation 140,000 m³
- o Structural Filling 150,000 m³

Status

Completed

Al Khalili Construction LLC

• Location: Sohar



Project

Sohar Maritime College

- Supply of 6250 m3 Imported Backfilling Material. (2010)
- Supply and filling of 19000 m2 granular material including manpower, machinery. (2010)
- Initial grading, leveling & compaction of 19000m2 area. (2010)

Status

Completed

Project

Construction of 19000 m2 & 100 mm thick Asphalt Road at Sohar Maritime College. (2010)

Status

Completed

Desert Line Projects LLC

• Location: Sohar



Project

Construction of Al Hambar-6 Pump Station and Waqaibah-6 Lift Station for Sohar Sewerage Network- Phase 1 Project. (2010)

Status

Completed



Surveying Equipment's

Equipment Type	Manufacturer	Quantity (No)
3-D Laser Scanner System	Optech	1
RTK System	Leica	1
Total Station	Topcon	2
Levelling Instruments	Topcon	4

Equipment's Category

Equipment & Machineries Type	Manufacturer	Quantity (No)
Crane	XCMG	1
Shovel	Komatsu	5
JCB	JCB	6
Excavator	Komatsu/Volvo	4
Roller/Compactor (1T)	DynaPac	6
Roller/Compactor (10T)	Komatsu	4
Grader	Komatsu	3
Forklift	TCM	7
Dumper	Man	4
Tipper 18 m3	Hino	8
Trailer 35 m3	Scania/Volvo	9
Water Tanker (5000G)	Volvo	3
Canter Dina (3T)	Mitsubishi	7
Bus	TATA/Mitsubishi	5
Pick Up	Mitsubishi	8
Hiab	Silla	2





Company Appreciation Letters



PROJECT GALLERY

Civil works

AL-BATINA INT ENGINEERING & SERVICES LLC





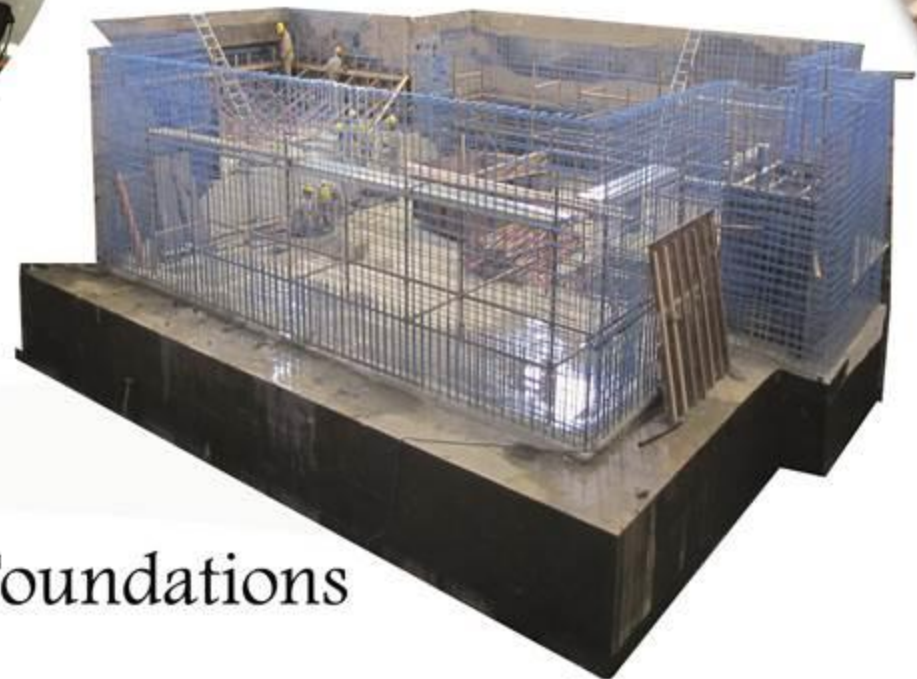
Construction of Entrance Gate Structures



Industrial Workshop/Warehouse Buildings



Industrial Buildings Office Buildings Interior Finishes



Machine Foundations



Piling Testing



Piling Works



Lateral Load Test



Static Load Test



On Ground Crane Rail



Sleepers



Road Works



Tank Foundation



Earth Work~Land Development





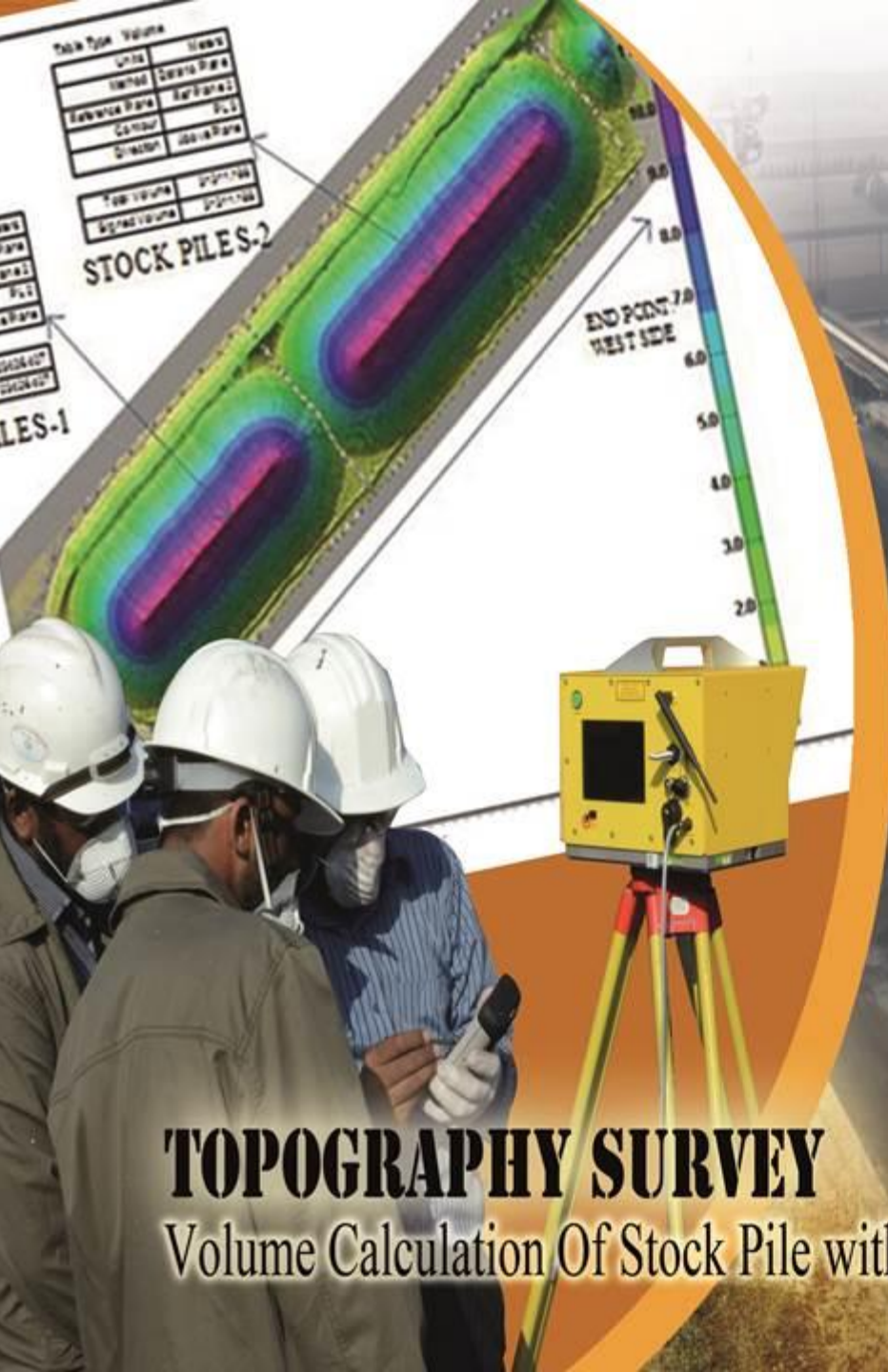
Pre-Engineered Building Erection



Sheet Pile
Installation Work



Survey Work



TOPOGRAPHY SURVEY

Volume Calculation Of Stock Pile with Laser Scanner





PROJECT GALLERY

Mep works



Piping Works



Pump Alignments & Pumps Installation



Power
Transformer



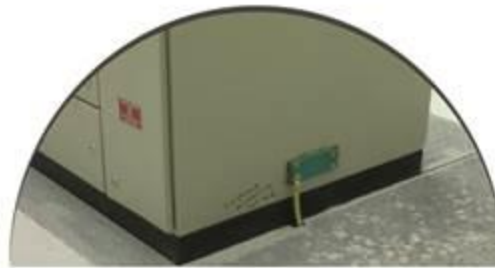
Ups
&
Batteries



Switch Gear Panel



Installation Of Lightning Arrestors



Earthing Of Equipment & Structures

High Rise Lighting System For Storage Yarde



Communication System



Fire Detection System



Fire Fighting System

Abi

AL-BATINA INT ENGINEERING & SERVICES LLC

الباطنة الدولية للهندسة والخدمات ش.م.م

epi



Sohar ~ Sultanate Of Oman

P.O. BOX 105 CODE 322

TEL 22005778 FAX 22005779

www.albatina.com

Supervision/Eng. Amir Mushtaq
Designed & directed / Essa Shaheen